

NUTRITION IN GENERAL PRACTICE

Dr Esther Fan BVSc(dist)

Vet Net Foundation, India

18 September 2021

Nutrition



- What do I feed?
- How much do I feed?
- But what about [chicken/vegetables/meat/rice/milk/oil....]?
- Are expensive brands better?
- Is wet or dry better?

'What do I feed?'



Dog food is for dogs
Cat food is for cats
Human food is for humans



'How much do I feed?'

TYPICAL COMPOSITION

Protein, Crude	6.0 %
Fat, Crude	4.4 %
Fibre, Crude	0.5 %
Metabolisable Energy	75 kcal/100 g
Minimum per 100 g	
Omega 6	
Zinc	10 mg
Vitamin E	210 IU
Calcium	145 mg
Phosphorus	120 mg

INGREDIENTS
Meats (Chicken, Beef, Sheep &/or Pork); Vegetables; Binders (Gluten, Beef &/or ...)

Minerals; Vitamins and Flavour.

FEEDING GUIDE
Here's a simple guide to meeting your dog's daily nutritional needs. Individual needs may vary depending on the age, breed, activity level or environmental factors.

Weight of dog (kg)	Wet Only Can	Mixed Feeding Can + Dry* Cup	
		Can	Cup
5	1/3	1/4	1/3
10	2/3	1/3	2/3
20	1	1/2	1 1/4
30	1 1/3	2/3	1 1/2

1 standard metric cup (250 ml) = 115 g *PEDIGREE® Dry Adult

Follow the mixed feeding guide to let your dog enjoy the best of both worlds.

Read the packaging

sheep); canola meal; ... salt; minerals; amino acid; vitamins; antioxidants; vegetable powders and colours.

FEEDING GUIDE
Here's a simple guide to meeting your dog's daily nutritional needs. Individual needs may vary depending on the age, breed, activity level or environmental factors.

Weight of dog (kg)	Only (g)	Mixed Feeding	
		Wet* (g)	+ Dry (g)
5	90	200	40
10	150	300	80
20	250	600	120
30	340	800	160
40	420	900	220
50	500	1100	250
70	640	1400	330

*Wet feeding based on PEDIGREE® Adult Can
1 standard metric cup (250 ml) = 115 g

335 kcal per 100 g

Research shows that feeding your dog a mix of both wet and dry products has a broad range of health benefits. When feeding both, simply halve the recommended

But what about....?



Calcium?

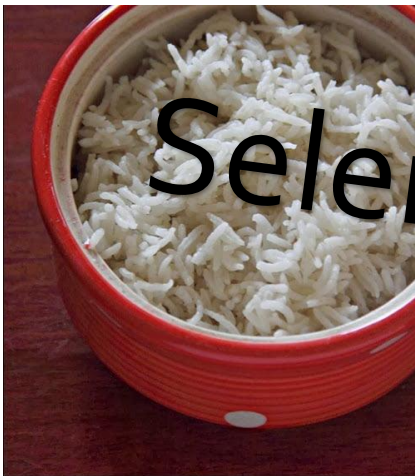


Taurine?



Human food is not balanced

Selenium?



1. BALANCE

- Home cooked/human diet is not balanced
- It is very hard to balance a home cooked diet if you are not a nutritionist.
- All dog food marketed as a 'complete and balanced' formula will have the right balance of protein, calcium, magnesium, Vit K etc
- If you feed a commercial diet according to the guidelines, your dog won't lack nutrients.

AAFCO

- American Association of Feed Control Officials
- Produce **nutrition profiles/standards** for pet foods
- The AAFCO statement on pet food packaging means the food has been **formulated with nutrients in the right balance**, according to AAFCO profiles.
- 'Minimum standards' 'Recipes'



AAFCO Dog Nutrient Profiles

Growth and Reproduction

- Protein 22.5%
 - Further broken down into specific amino acid requirements
- Fat 8.5%
- Minerals
 - Includes calcium, phosphorus, potassium, sodium, chloride, magnesium, iron, copper, manganese, zinc, iodine, selenium
- Vitamins
 - Includes vitamin A, vitamin D, vitamin E, thiamine, riboflavin, pantothenic acid, niacin, pyridoxine, folic acid, vitamin B12, choline

Adult Maintenance

- Protein 18%
 - Further broken down into specific amino acid requirements
- Fat 5.5%
- Minerals
 - Includes calcium, phosphorus, potassium, sodium, chloride, magnesium, iron, copper, manganese, zinc, iodine, selenium
- Vitamins
 - Includes vitamin A, vitamin D, vitamin E, thiamine, riboflavin, pantothenic acid, niacin, pyridoxine, folic acid, vitamin B12, choline

AAFCO Cat Food Nutrient Profiles

Growth and Reproduction

- Protein 30%
 - Further broken down into specific amino acid requirements
- Fat 9%
- Minerals
 - Includes calcium, phosphorus, potassium, sodium, chloride, magnesium, iron, copper, manganese, zinc, iodine, selenium
- Vitamins
 - Includes vitamin A, vitamin D, vitamin E, vitamin K, thiamine, riboflavin, pantothenic acid, niacin, pyridoxine, folic acid, vitamin B12, choline, biotin

Adult Maintenance

- Protein 26%
 - Further broken down into specific amino acid requirements
- Minerals
 - Includes calcium, phosphorus, potassium, sodium, chloride, magnesium, iron, copper, manganese, zinc, iodine, selenium
- Vitamins
 - Includes vitamin A, vitamin D, vitamin E, vitamin K, thiamine, riboflavin, pantothenic acid, niacin, pyridoxine, folic acid, vitamin B12, choline, biotin

Cats need more protein than dogs
Growing animals need more Protein and Phos/Ca than adults

AN MACKEREL

Ingredients: Mackerel Meal, Legumes (lupins and beans), Sorghum, Tallow, Sweet Potato, Added Vitamins & Minerals, Beet Pulp, DHA Algae, Chia Seeds, Chicory Extract, Carrot, Natural Antioxidant from Rosemary.

Adult Australian Mackerel is formulated to meet the nutritional levels established by the AAFCO Dog Food Nutrient Profiles for maintenance of adult dogs.

Individual feeding needs may vary depending on age, weight, breed and activity level. The table to the left is a guide only and as nutrition requirements can change over time, be sure to adjust to suit your pet's needs. If unsure always consult your veterinarian.

Ensure your dog always has access to clean and fresh water. We recommend you feed your dog twice per day.

GLOW SATISFACTION GUARANTEE: If for any reason this product was not able to meet your expectations please return the unused portion to the place of purchase for a full refund or replacement.

NUTRITIONAL INFORMATION

	PER 100g	PER 1000kcal
Protein	27.0%	79.7g
Crude Fat	15.0%	43.5g
Crude Fibre	3.6%	10.4g
Aspartic Acid	9.0%	26.1g
Arginine	10.0%	28.9g
Energy (M.E)	345kcal	
Omega 3 Fatty Acids*	0.4%	1.1g
Omega 6 Fatty Acids*	1.1%	3.2g
Omega 6:3*	2.75	

*Nutrients not recognised by AAFCO as essential.

Pure, Shredded Chicken

3 Simple Ingredients

100% Natural

INGREDIENTS: Chicken, Chicken Broth, Water Sufficient For Processing. **GUARANTEED ANALYSIS:** Crude Protein (Min.) 12%, Crude Fat (Min.) 0.5%, Crude Fiber (Max.) 1%, Moisture (Max.) 90%, Ash (Max.) 1.5%. Wellness CORE Simply Shreds Shredded Boneless Chicken Recipe in Broth is intended for intermittent or supplemental feeding only. **FEEDING INFORMATION:** This is a complementary food intended to be fed with a complete and balanced cat food diet. **CALORIE CONTENT (CALCULATED):** 585 kcal/kg or 29 kcal/pouch (ME, as fed).

If for any reason you or your cat are not satisfied with Wellness

But...

**Doesn't he
need variety?**

**Won't he get
bored?**

**He's very
picky**

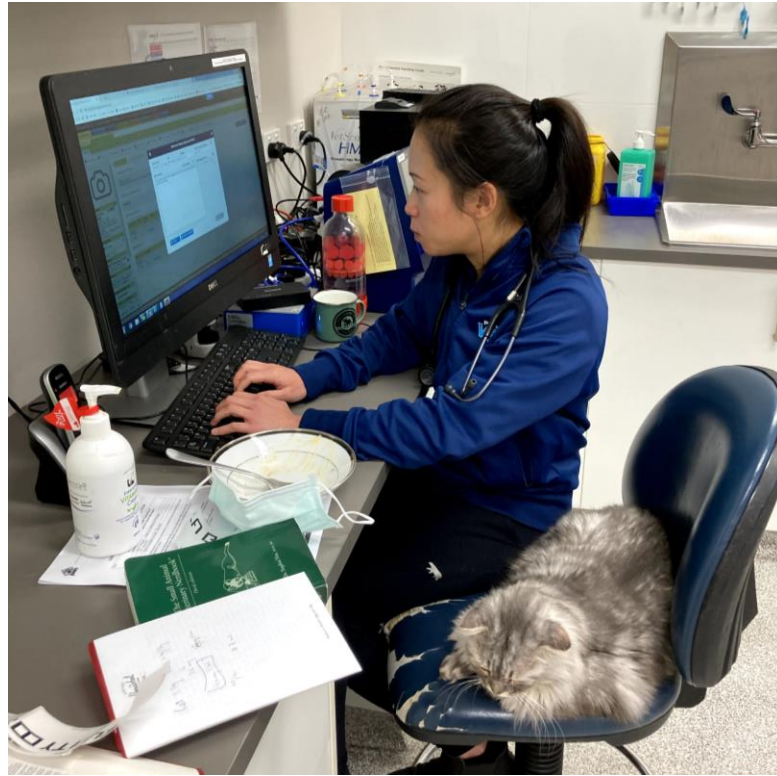
**I feel bad feeding
him only biscuits**

Are expensive brands better?

- Yes
- and No

2. QUALITY

- The difference between cheap brands and the premium brands is the QUALITY of the ingredients.
- eg, the cheaper brands might have soy/vegetable protein. The more expensive brands may have chicken/meat protein, → But both will have an adequate amount of protein.
- However they will all be BALANCED
- Therefore ***both will be better than home cooked diet***



Wet vs dry

Doesn't really matter

- Wet:
 - Up to 80% moisture content
 - Therefore more \$\$ to feed

- Dry:
 - Up to 12% moisture
 - More economical

'kibble',
'biscuits'
'pellets'



→ Same nutrient balance in both

Premium brands

- Still equally **BALANCED**
- Higher **QUALITY** ingredients
- Less 'fillers' = feed less quantity = **less Faeces** to scoop up!

AND

- **FOOD TRIALS** to test the safety and quality of their food

→ Research/trials are expensive, so this food costs more



Pet food labels

- All ingredients are listed in order of proportion by weight.



AN MACKEREL

Ingredients: Mackerel Meal, Legumes (lupins and beans), Sorghum, Tallow, Sweet Potato, Added Vitamins & Minerals, Beet Pulp, DHA Algae, Chia Seeds, Chicory Extract, Carrot, Natural Antioxidant from Rosemary.

Adult Australian Mackerel is formulated to meet the nutritional levels established by the AAFCO Dog Food Nutrient Profiles for maintenance of adult dogs.

NUTRITION

Protein
Crude Fat
Crude Fibre
Ash
Moisture
Energy (M.E)
Omega 3 Fatty
Omega 6 Fatty
Omega 6:3*

*Nutrients not r

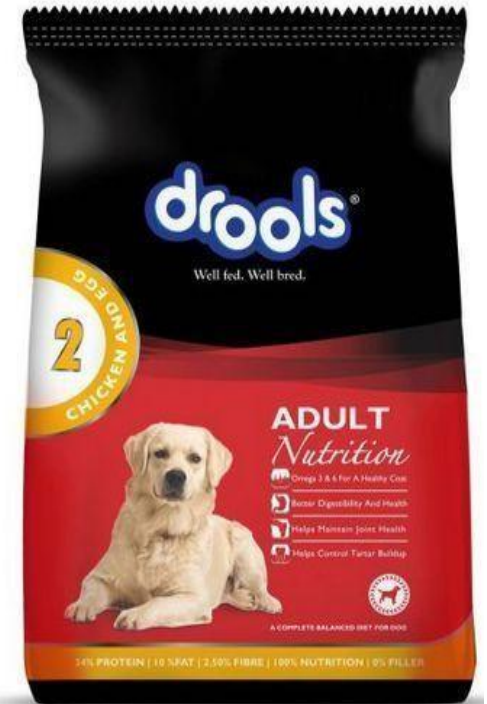
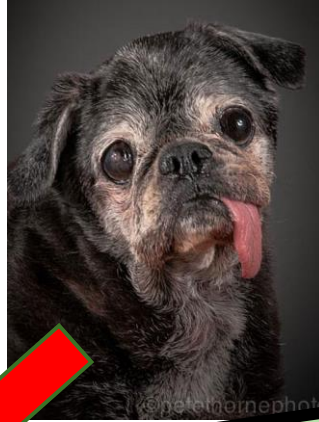
INGREDIENTS

Wholegrain cereals; meat by-products & meat (poultry, beef &/or sheep); canola meal; natural flavours (chicken); beet pulp; iodised salt; minerals; amino acid; vitamins; antioxidants; vegetable powders and colours.

FEEDING GUIDE

Here's a simple guide to meeting your dog's daily nutritional needs. Individual needs may vary depending on the age, breed, activity level or environmental factors.

Weight of dog (kg)	Dry Only (g)	Mixed Feeding	
		Wet* (g)	+ Dry (g)
5	90	200	40
10	150	300	80
20	250	600	120
30	340	800	160
	400	1000	220



Puppy food

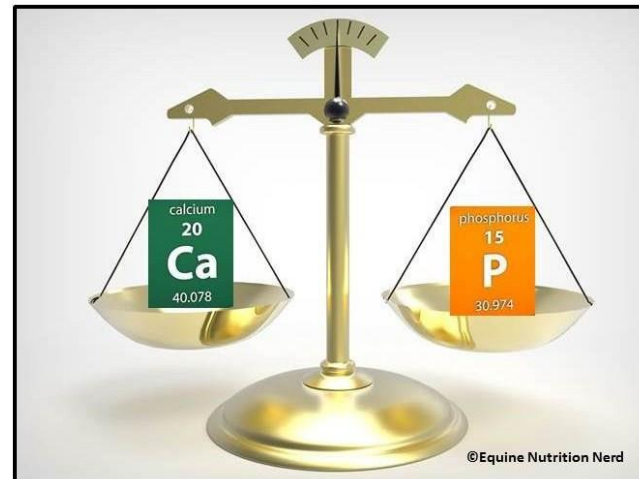
- Large/Giant breeds: Large breed puppy food 18-24 mths
- All other puppies: Puppy food til 12mths

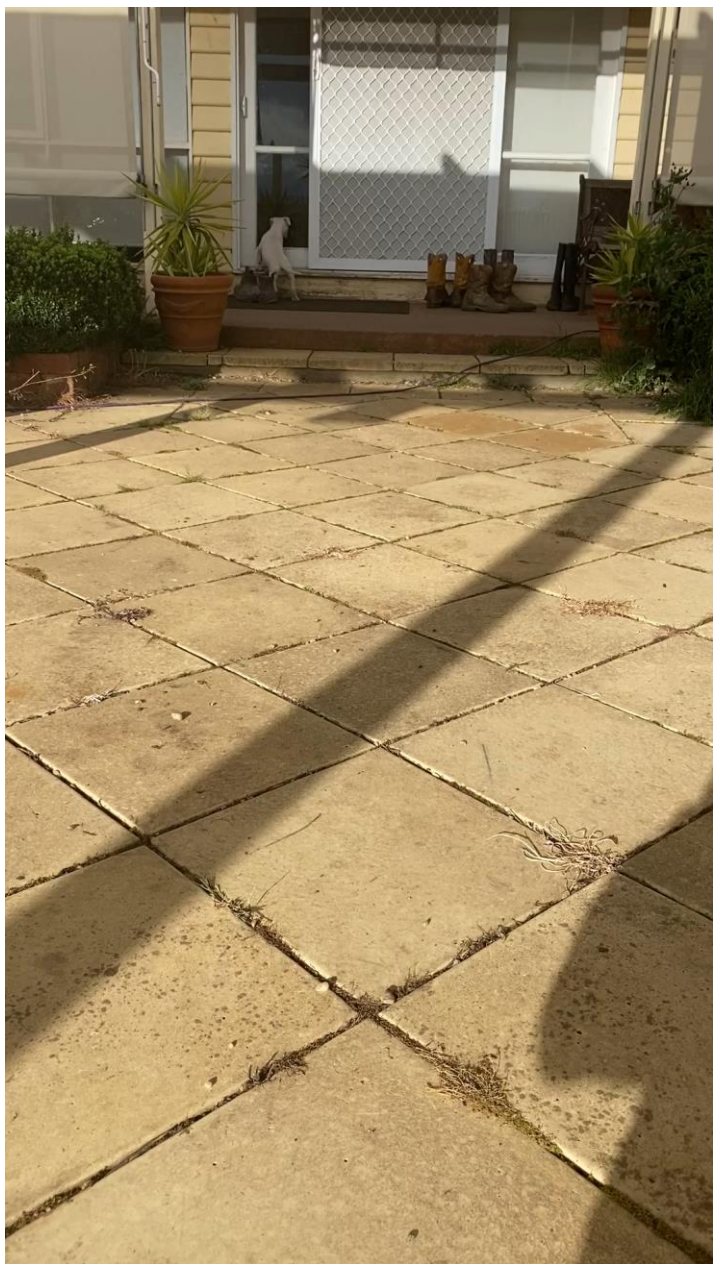


FEEDING TABLE

24H		2-5 months							
		2 m		3 m		4 m		5 m	
ADULT WEIGHT	2 kg	(g)		(g)		(g)		(g)	
	6 kg	49	4/8	54	5/8	55	5/8	55	5/8
	10 kg	103	1+1/8	119	1+2/8	125	1+3/8	126	1+3/8
		146	1+5/8	172	1+7/8	182	2	185	2
		6-10 months							
		6 m		7 m		8 m		10 m	
ADULT WEIGHT	2 kg	(g)		(g)		(g)		(g)	
	6 kg	48	4/8	40	4/8	39	3/8	39	3/8
	10 kg	125	1+3/8	113	1+2/8	101	1+1/8	89	1
		184	2	167	1+7/8	149	1+5/8	132	1+4/8

ME = 4083 kcal/kg = 240 ml (= 91 g)





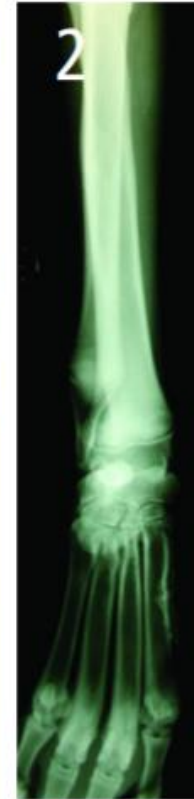
Angular Limb Deformities in a Giant-Breed Puppy

A 6-month-old male, 47-kg Tosa-Ken was presented for lameness with bilateral carpal valgus.

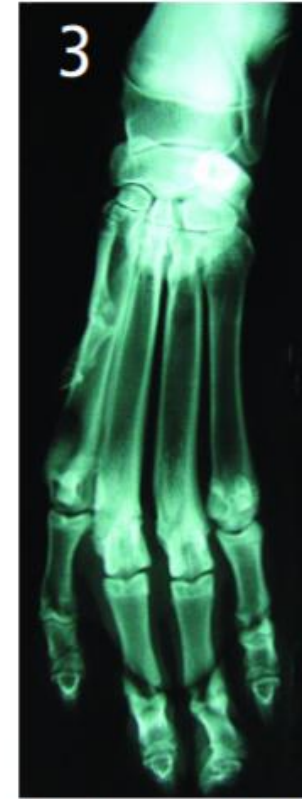
History. Beginning 2 months prior to presentation, the dog demonstrated signs of worsening bilateral angulation of the distal extent of the antebrachia; the right forelimb was more severely affected than the left (**Figure 1**). The patient was being fed a homemade diet of raw whole chicken, vegetables, vitamins, and minerals. With onset of forelimb deformities, the dog was treated with 1500 mg vitamin C Q 12 H; there was no improvement.

Physical Examination. Carpal valgus was present bilaterally but worse on the right side. The dog was moderately overweight with a body condition score (BCS) of 7/9. Pain was present on flexion of the right carpus and right forelimb manus; the right carpus and digits knuckled over when the patient walked.

Imaging. Radiographs of both antebrachia were obtained. Bilateral mild carpal valgus centered at the antebrachial carpal joint with fore-



Craniocaudal radi-



Dorsopalmar radiograph of

Breed specific food

- No real benefit/difference.



Pregnancy/lactation

- 2nd half of pregnancy – **double** rations
- 3rd trimester: good quality **puppy food** (but not large breed)
- Lactation: puppy food - **triple** rations
- DON'T GIVE Calcium, can be detrimental

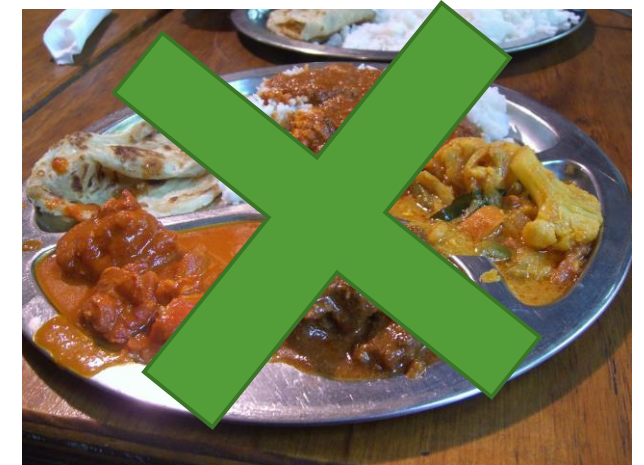
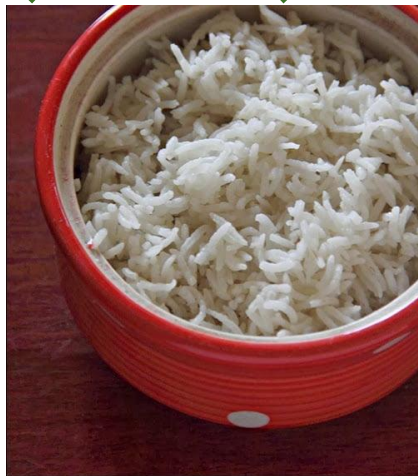


Sick patients

- **Acute Vomiting/Diarrhoea:**
 - Chicken + Rice
 - Royal Canin Gastrointestinal
- **Anorexic/sick animals:**
 - Royal Canin Recovery
 - Anything they will eat!
 - Syringe/force feed



But what about....?



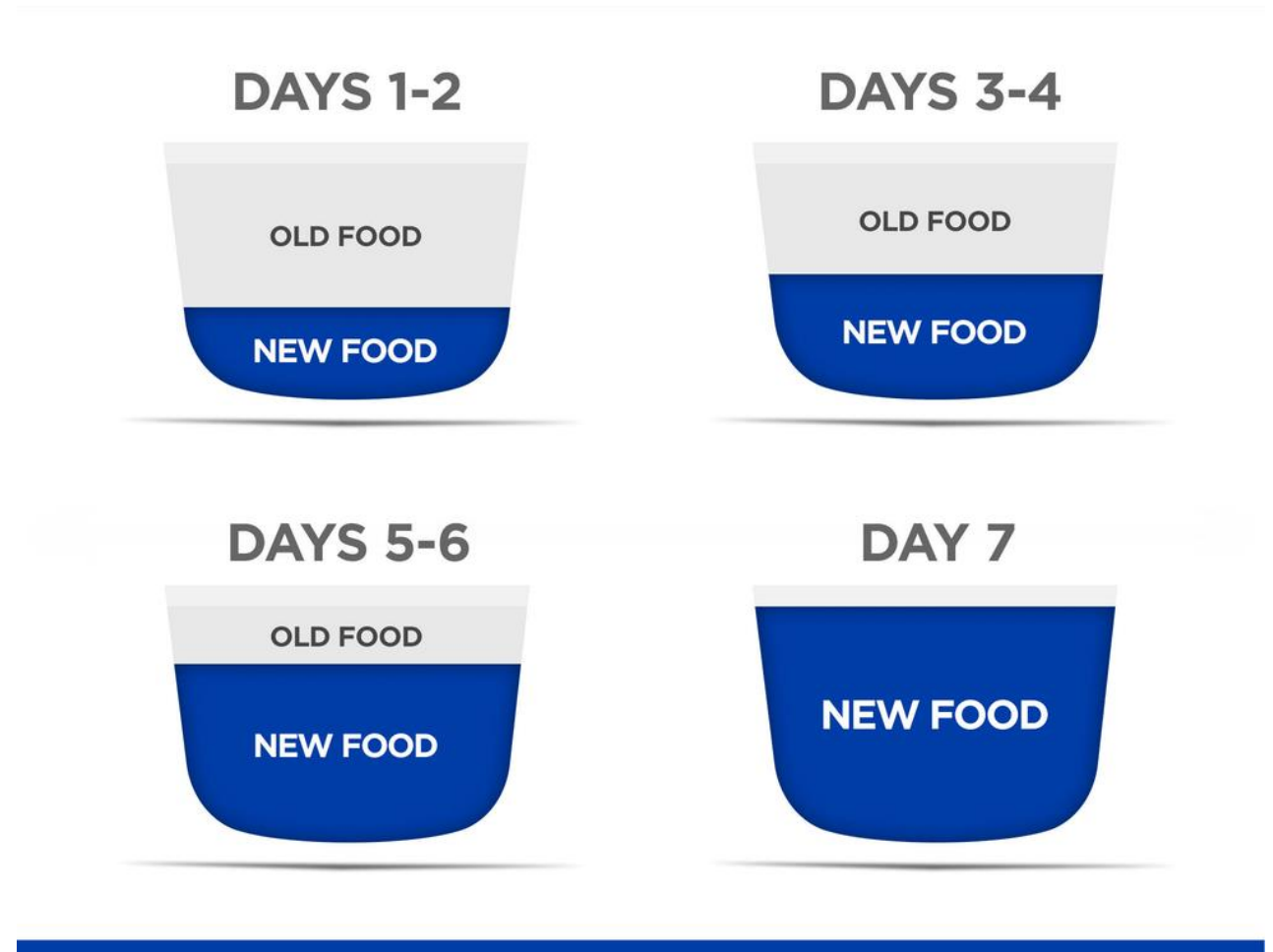
Are bones good?

- Yes.... and No.
- *If* you give bones:
 - RAW
 - BIG
 - TO CHEW ***ON*** NOT CHEW ***UP***



Transitioning

- Important to explain
- Take as long as you need
- Food aversion
 - Especially when sick



What about Grain Free?

- No proven benefit
- But all still balanced
- Most tend to be higher quality



Rabbits

- Many diseases caused by poor nutrition
- Need to keep eating to avoid gut stasis
- Fresh leafy vegetables: **2c/kg/day**
 - Avoid lettuce
 - Limit fruits *and carrots* (high carbohydrates)
- Unlimited hay/grass
- Small amount pellets (optional)
- If sick: feed Critical Care



Summary:

- **Feed dog/cat food only**
 - Look for AAFCO statement
 - Wet or dry doesn't matter
- **Puppy food til 12mths old**
 - Large breeds: large breed puppy food, til 18-24mths
- **Feed according to feeding guidelines**
- **Transition slowly**



Questions?

Questions?

Obesity

1. How MUCH are you feeding?
2. What ELSE are you feeding? (WHO else is feeding?)
3. Reduce AMOUNT /cut out snacks!
4. Increase EXERCISE
5. Change to weight loss FORMULA

But he always looks hungry!

The kids always throw food from the table to him

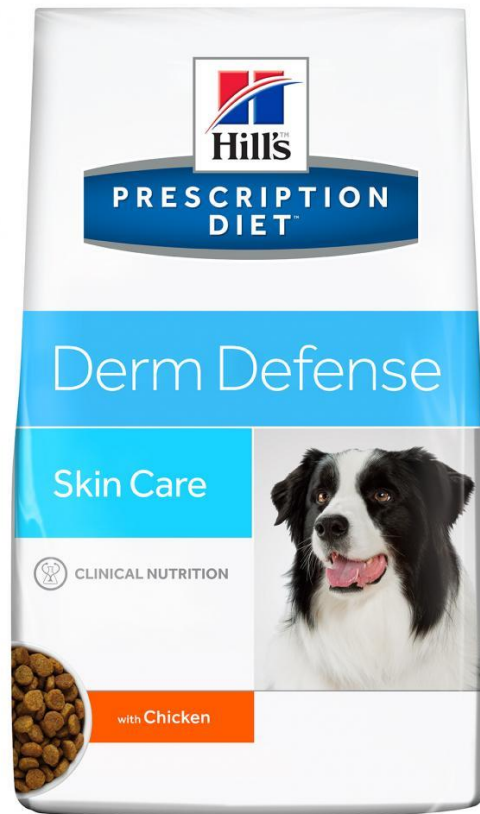
We need treats for training



Arthritis



Atopy, skin allergies



Dental disease prevention



Stress/FLUTD



CKD

